

JOSIE EASTWOOD

Studio Ramblings Summer 2021



Tessa Colman, *Helmsdale Gorge*, oil on gesso panel, 127 x 127 cm

What a relief that life has opened up a bit, and we are beginning to feel a little more normal, fingers crossed for the autumn! This summer has been very busy at the gallery, for the first time we hosted two exhibitions and that enabled us to introduce work by many new artists.

I have loved resuming my studio visits, and as a result of the opening up, I have travelled all over the country to an array of different places, sourcing work for a busy Autumn.

Autumn Exhibition

Our Autumn Exhibition will run from Friday 8th to Saturday 23rd October. We have decided to continue opening each exhibition with two days of viewings by appointment—it just feels safer. Over the opening weekend of the Autumn Exhibition, Friday 8th and Saturday 9th October, we will have viewings by appointment, and then from Sunday 10th the gallery will be open to everyone, no appointment needed, until the end of the exhibition.

New Artists

Several artists will be showing with us for the first time in this exhibition, including **Tessa Coleman**, **Andrew Graves**, **Rosa Roberts**, and ceramicist **Hal Haines**. More information on all of them can be found on our website and there are clips from my studio visits on our Instagram feed.

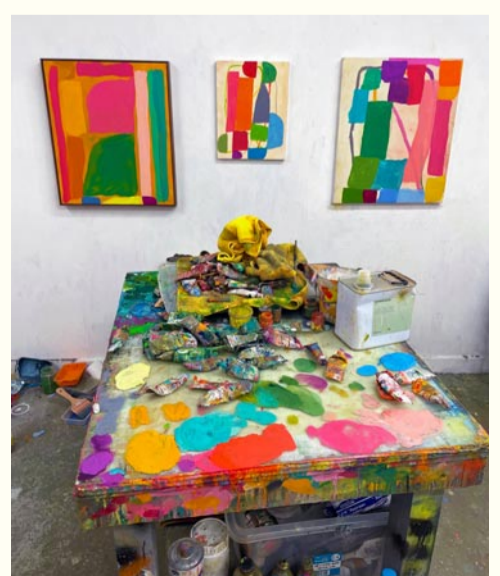
Angela A'Court is returning to the gallery after a seven year absence due to time spent living in the states. Her ethereal, delicate, prints of abstract quasi-botanical shapes on vintage Japanese text are exquisite. **Melanie Goemans**, whose finely painted canvases of trees with elements of gilding, is working on a new series for the show. The mixed media canvases that we have selected from artist **Rosa Roberts**, explode with bold colour and gestural brushstrokes, and are botanical in feel, almost aboriginal. They really are stunning, and any single painting would make a room. **Holly Macdonald** has produced a new series of large vibrant Scottish landscapes, we love her painterly expressive style. Holly's work proved very popular in June, with a total sell out!



Hal Hines
The pigeon and The Dove, ceramic



Rosa Roberts, *Bali Fern*
mixed media on canvas
diptych, 140 x 160 cm
May be bought as
a diptych or individually



Three recent visits: from left: **Emma Haggas**, with new works in her Wiltshire studio; **Angela A'Court**, just back from New York via Tokyo; and **Andrew Graves'** London studio with three new paintings



Emily Maude, *The Porcelain Collector's Mantle*
gouache on hand-made paper, 30 x 30 cm



Rupert Till,
Till we dance, metal, aged zinc finish, 1.2m h

Christmas Exhibition

The Christmas exhibition, Friday 19th November–Saturday 4th December. This exhibition will include works by many gallery favourites and newcomers including **Emily Maud**, **Georgia Fiennes**, **Harriet Salt**, and **Helen Tabor**. You will be able to see those in the show on the website mid-October. We will have more affordable art for this show, with presents and Christmas in mind.

Private View

Gallery Christmas Drinks Sunday 21st November

Covid permitting, we will be hosting Christmas drinks at the gallery, and this will also act as a private view for the Christmas exhibition and invitations will be sent out for this in November.

An easy way to find us

Finally, there seem to be so many signs out on the roads directing you to exhibitions, with confusion ensuing as to which sign is for which show. Just in case you have been puzzled in the past, here is a neat link to a map showing the gallery location: simply tap it into a browser on your phone, tablet, or computer:

<https://w3w.co/songbirds.shred.tuned>.

Internships

Last year Holly Macdonald joined us part-time, and we so enjoyed having her around that it gave us the idea of gallery internships. We will now offer two part-time internships a year, each for three months, targeted at graduates with an interest in the art world. We know how difficult it can be to gain experience in the art world, and hopefully this scheme will provide that, enabling the intern to secure a long term role at a gallery. At the same time as giving us the extra help we need. So, Olivia Buer will be joining the team in September. We will be advertising for the next intern in January, for the March to May internship. If you know anyone who this might suit, do pass on the word.

We look forward to welcoming us to our next exhibition in October!

Josie

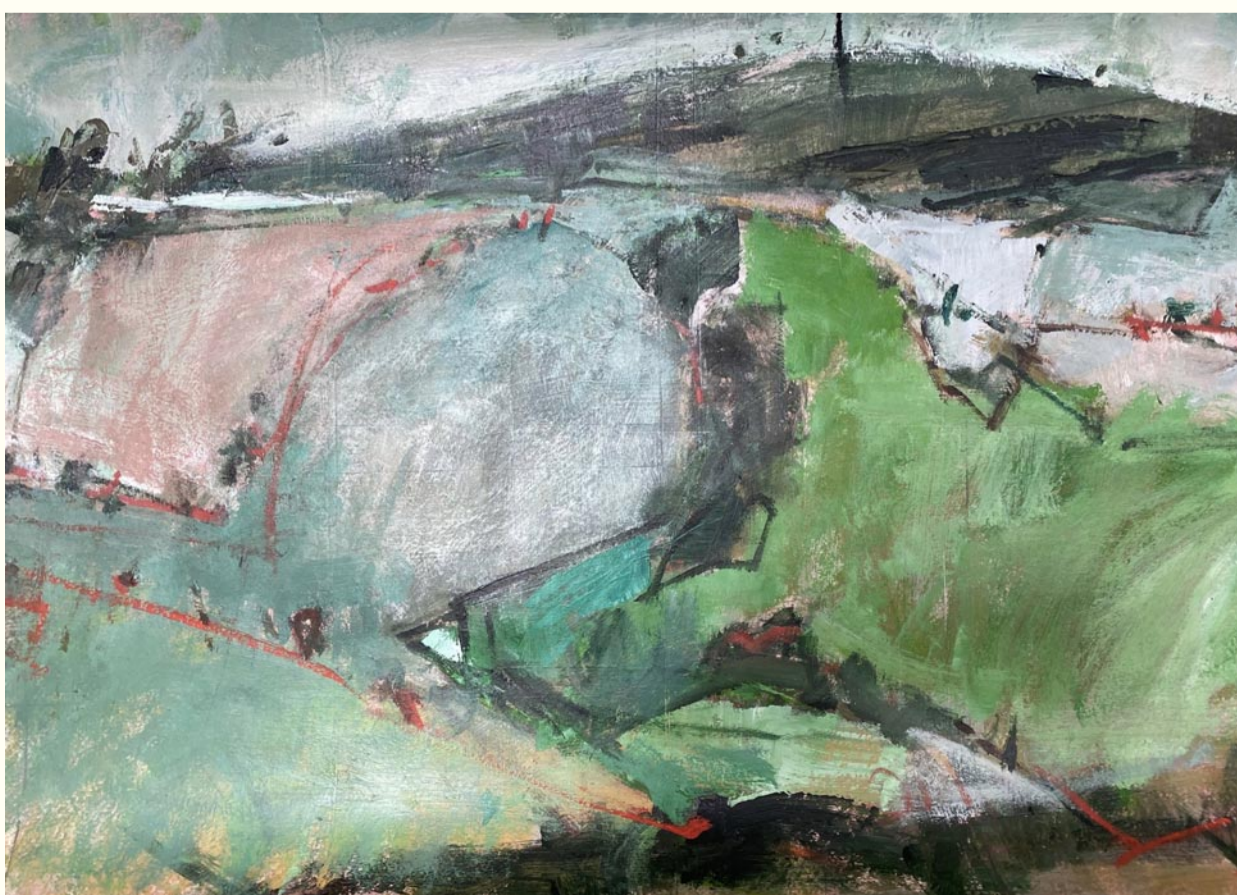
Do follow us on Instagram: [eastwoodfineartltd](https://www.instagram.com/eastwoodfineartltd).



Holly Macdonald
Maybe Wicklow, oil on canvas, 90 x 120 cm



Amelia Tuttinett
Gladys, Mildred, and Silas, bowl



Kate Corbett-Winder
Monument
oil & acrylic on paper
50 x 72 cm



Karin Camkin

Winter Walk on a Windy Day, oil on gessoed panel, 50 × 22 cm



Nicholas Turner

Cat and Fisherman, oil on canvas, 80 × 80 cm



Ellen Watson

Jellytots Beach, mixed media on canvas, 100 × 120 cm



Jonathan Schofield
Blue Figure, oil on linen, 150 × 125 cm



Cornelia O'Donovan
Red and Pink, oil on canvas, 120 × 120 cm



Kerry Edwards
Lobster Dish, shallow bowl, 40 × 6 cm



Andrew Squire
2 Cows on Beach, oil on canvas, 90 × 90 cm



Hugo Grenville
Memories of Pienza, oil on canvas, 96 × 120 cm

Autumn Exhibition 2021

Artists include

Sculpture

VICKI ANDERSON
CHRISTOPHER MARVEL
RUPERT TILL
CLARE TRENCHARD

Ceramics

KERRY EDWARDS
HAL HAINESS*
CHRISSY SILVER
LAURANCE SIMON
AMELIA TUTTIETT

Vicki Atkinson, *The Whisper*
jesmonite, 110 x 60 x 40 cm

Paintings

ANGELA A'COURT
STELLA AGNEW
JEREMY ANNEAR
KAREN CAMKIN
TESSA COLEMAN*
KATE CORBETT-
WINDER
MELANIE GOEMANS
EMMA HAGGAS
ANDREW GRAVES*
HUGO GRENVILLE

HOLLY MACDONALD
BEATRICE HASELL-MCCOSH
EMILY MAUDE
ALICE MUMFORD
CORNELIA O'DONOVAN
JONATHAN POCOCK
ROSA ROBERTS*
JONATHAN SCHOFIELD
ANDREW SQUIRE
NICHOLAS TURNER
ELLEN WATSON

*NEW TO THE GALLERY



Eastwood Fine Art

THE BARN, UPPER MANOR FARM
LONGSTOCK, HAMPSHIRE SO20 6DR
WWW.JOSIEEASTWOOD.COM

FOLLOW US ON INSTAGRAM

